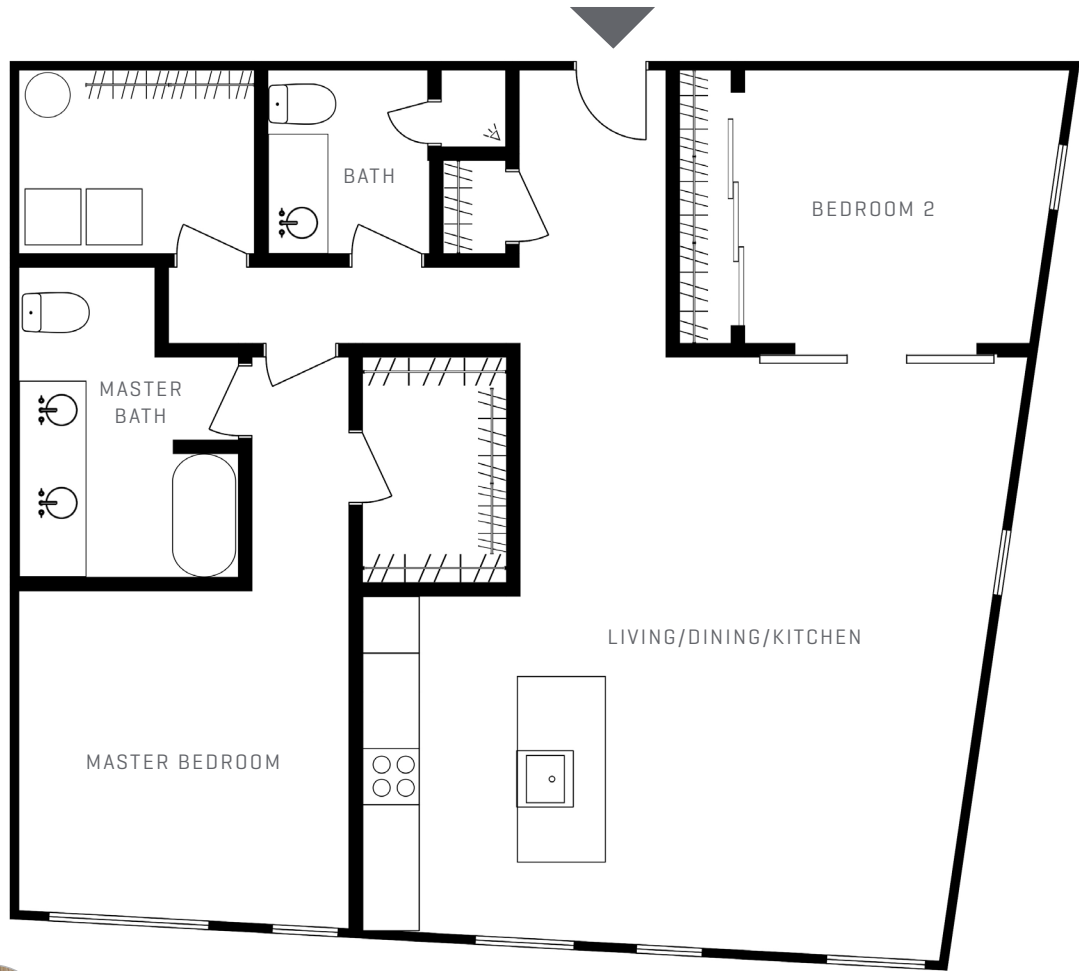


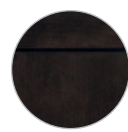
FLOOR PLAN K

2 BEDROOMS / 2 BATHROOMS

SIX
HUNDRED
WEST
MAIN



KITCHEN
COUNTERS

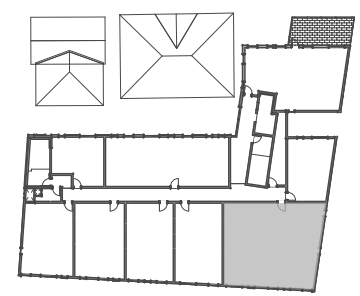


KITCHEN
CABINETS



FLOORING

KEY PLAN - LEVEL 5



[Square footages are approximate. Layouts of interiors are for general reference only and are not intended to precisely depict the actual as-built conditions. Drawings are not to scale and are subject to change. Professionally managed and leased by Cushman & Wakefield | Thalhimer. Equal Housing Opportunity community.]

600 West Main Street | Charlottesville, VA | 22903
sixhundredwestmain.com | 434 989 3300