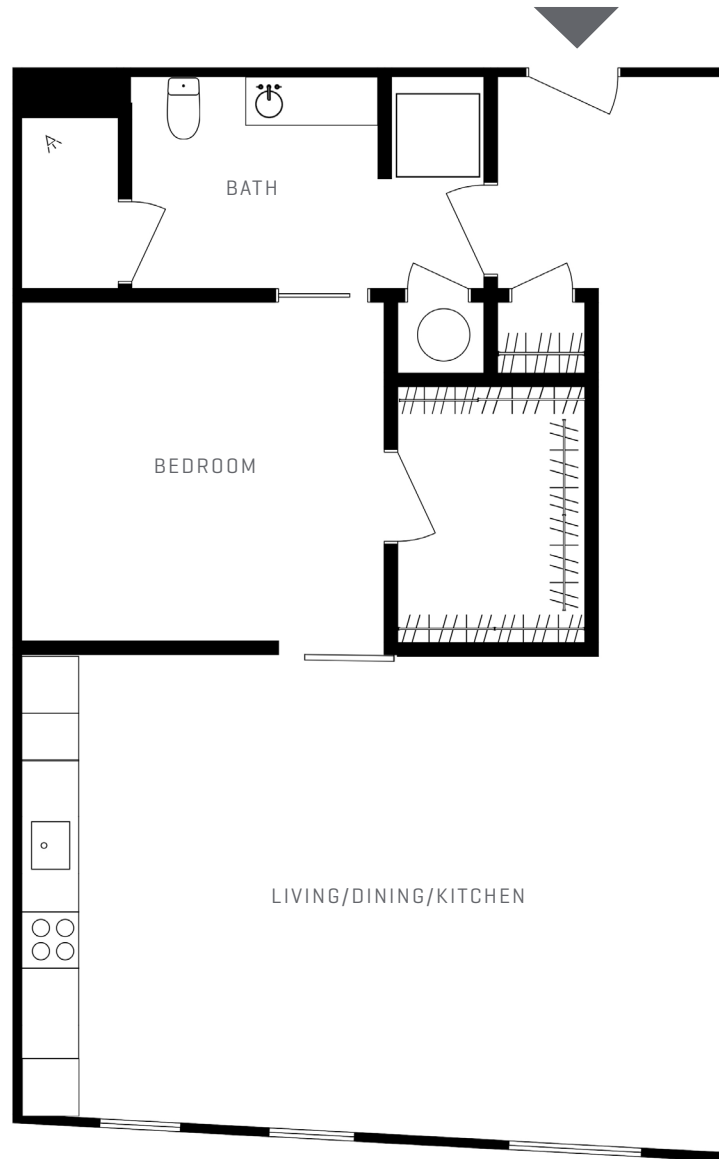


# FLOOR PLAN C

1 BEDROOM / 1 BATHROOM

SIX  
HUNDRED  
WEST  
MAIN



KITCHEN  
COUNTERS

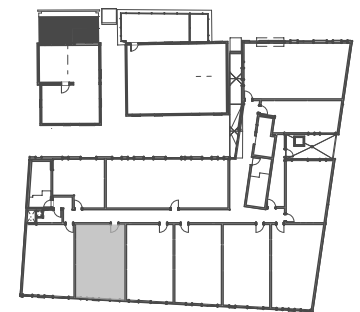


KITCHEN  
CABINETS



FLOORING

KEY PLAN - LEVEL 2, 3, 4, 5, 6



[Square footages are approximate. Layouts of interiors are for general reference only and are not intended to precisely depict the actual as-built conditions. Drawings are not to scale and are subject to change. Professionally managed and leased by Cushman & Wakefield | Thalimer. Equal Housing Opportunity community.]

600 West Main Street | Charlottesville, VA | 22903  
sixhundredwestmain.com | 434 989 3300